

Universal AC Input

Conducted EMI to meet FCC Class B

Wide Range Output Adjustment

Worldwide Safety Agency Approvals

Optional DIN Rail Mounting

Lambda's 3 Year Warranty

Lambda's RWS-A series meets the demands of today's global Industrial market with universal AC input, international agency approvals including the CE Mark, and FCC Class B EMI compliance. The RWS-A Series is available in 15 & 30 watt packages with output voltages ranging from 5 to 48 volts with a $\pm 10\%$ adjustment range.

Lambda's RWS-A Series will prove to be the Industrial choice for a high quality, reliable power supply backed by a 3-year warranty.

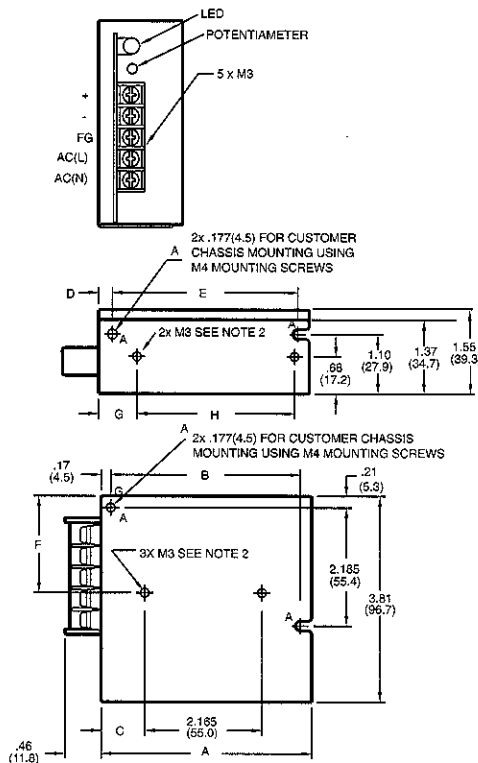
Similar products

Page

JWS	Higher Power	24
KW	Board Mount	10
ZWS	Lower Cost, PCB Mount	14
LW	Multiple Outputs	20
NES/DRP	Higher Power Din Rail	32

AC Input	85-265VAC, 47-440Hz.
DC Input	110-330VDC.
Efficiency	71% on 5.0V, 77% on 12.0-15.0V. 78% on 24.0 - 48.0V.
EMI	Conducted: FCC Class B.
Output Voltage Adj Range ..	±10%.
Line Regulation	0.4%.
Load Regulation	0.8%.
Ripple and Noise	120mV pk-pk for 5 volts. 150mV pk-pk for 12 & 15 volts. 200mV pk-pk for 24 volts. 300mV pk-pk for 48 volts.
Hold-up Time	20ms (typical).
Overcurrent Protection	Electronic current limiting circuits limits the output current to 105% of the maximum rated current with automatic recovery.
Overvoltage Protection	Non-crowbar, inverter shutdown type OV protection.
Cooling	Convection.
Operating Temperature Range	0°C to +60°C with derating above +50°C.
Storage Temperature	-30°C to +85°C.
Temperature Coefficient	Less than 1%.
Humidity	10% to 90% RH (non-condensing).
Isolation	Input to Output - 3.0kVAC. Input to Chassis (FG) - 2.0kVAC. Output to Chassis (FG) - 500VAC.
Output Status Indicator	A green LED when DC output is "ON".
Input and Output Connections	Barrier strip with clear plastic cover.
DIN Rail Mounting Bracket ..	LDIN30
Safety Agency Approval	UL 1950, CSA 2.2 No. 234, EN60950 and CE Mark (Low Voltage Directive)
Warranty	3 years.

OUTPUT	POWER (W)	MAX CURRENT AMPS AT			MODEL
		40°	50°	60°	
5V (4.5-5.5)	15.0	3.0	3.0	1.80	RWS-15A-5/A
	30.0	6.0	6.0	3.60	RWS-30A-5/A
12V (10.8-13.2)	15.6	1.3	1.3	0.78	RWS-15A-12/A
	30.0	2.5	2.5	1.50	RWS-30A-12/A
15V (13.5-16.5)	15.0	1.0	1.0	0.60	RWS-15A-15/A
	30.0	2.0	2.0	1.20	RWS-30A-15/A
24V (21.6-26.4)	16.8	0.7	0.7	0.42	RWS-15A-24/A
	31.2	1.3	1.3	0.78	RWS-30A-24/A
48V (43.2-52.8)	14.4	0.3	0.3	0.18	RWS-15A-48/A
	28.8	0.6	0.6	0.36	RWS-30A-48/A



	MODEL	
	RWS15A	RWS30A
A	3.87 (98.5)	4.78 (121.5)
B	3.50 (89.0)	4.40 (112.0)
C	.80 (20.5)	1.24 (31.5)
D	.25 (6.5)	.25 (6.5)
E	3.425 (87.0)	4.13 (105.0)
F	1.79 (46.5)	1.67 (42.5)
G	.70 (18.0)	.84 (21.5)
H	2.913 (74.0)	3.267 (83.0)
Weight lbs.	0.80	0.68

NOTE:
1. DIMENSIONS ARE IN INCHES EXCEPT DIMENSIONS () ARE IN MM.
2. 4x M3 TAPPED HOLES FOR CUSTOMER MOUNTING SCREWS MUST NOT PROTRUDE INTO POWER SUPPLY BY MORE THAN .23 (6).