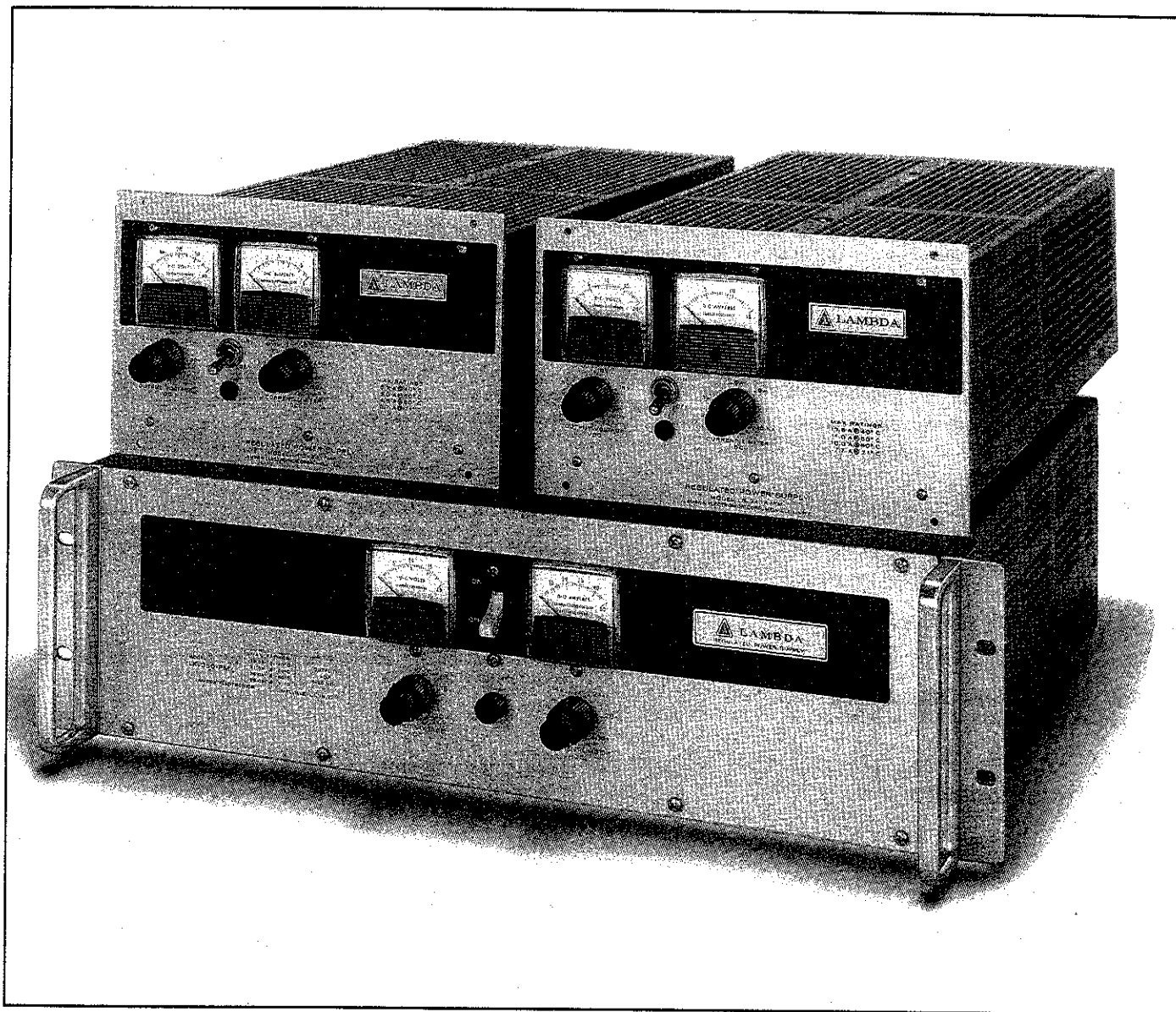


### LAMBDA'S LK SERIES



#### LOW NOISE HIGH POWER UNITS FOR THE TEST ENVIRONMENT

- Designed with constant current/constant voltage operation.
- All models are remotely programmable by voltage or resistance.
- All models are convection cooled and do not require external blowers or heat sinking.
- Series parallel operation.
- No voltage spikes or overshoot at turn-on, turn-off or power failure.
- Meets military environmental specifications for: Vibration: MIL-T-4807A; Shock: MIL-E-4970A Procedures 1 & 2; Humidity: MIL-STD-819 Method 507; Temperature Shock: MIL-E-5272C (ASG) Procedure 1; Altitude: MIL-E-4970A (ASG) Procedure 1.
- The LK Series is backed by Lambda's 5 year guarantee. This ensures the product will operate to published specifications for the life of the product per its guarantee.
- Grade 1 design.

# PART III—TEST, SYSTEMS AND LABORATORY POWER SUPPLIES

## LAMBDA'S LK SERIES

### DC OUTPUT

Voltage ranges shown in tables.

### REGULATED VOLTAGE

regulation, line or load ..... 0.015% or 1 mV whichever is greater for line variations from 105 to 132VAC, or for load changes from no load to full load.

remote programming resistance ..... 200 ohms/volt nominal.

remote programming voltage ..... volt per volt.

ripple and noise (20MHz Bandwidth) ..... 500 $\mu$ V RMS; with either pos. or neg. terminal grounded.

temperature coefficient ..... 0.015%/°C.

### CONSTANT CURRENT

(Current regulated line and load.)

### AUTOMATIC CROSSOVER

voltage range ..... as shown in tables.

current range ..... minimum—5% of 40°C rating.  
maximum—as shown in tables.

regulation, line ..... less than 10 mA or 0.1% whichever is greater for Input Variations of 105 to 132VAC.

regulation, load ..... less than 10 mA or 0.1% whichever is greater—  
from 0 to rated VDC load voltage change.

### AC INPUT

105 to 132VAC, 47-63Hz. For operation at 50Hz derate output current by 10%.  
187 to 242VAC, see AC option.

### OPERATING TEMPERATURE RANGE

Continuous duty from 0°C to +71°C with load current ratings shown in tables.

### STORAGE TEMPERATURE RANGE

–55°C to +85°C.

### OVERLOAD PROTECTION

#### THERMAL

Thermostat; automatic reset when over-temp. condition is removed.

### ELECTRICAL

External overload protection: adjustable, automatic electronic current limiting circuit limits the output current to the preset value, thereby providing protection for load as well as power supply. Current limiting settability to 105% of rated current. Internal failure protection: provided by fuse.

### INPUT AND OUTPUT CONNECTIONS

Terminal block on rear of chassis.

### METERS

Voltmeter and ammeter on all models.

### CONTROLS

#### DC OUTPUT CONTROLS

Coarse and fine voltage adjust and coarse and fine current adjust on front panel.

### POWER

On-off switch, front panel, —1/2 rack models; circuit breakers, front panel—full-rack models.

### REMOTE SENSING

Provision is made for remote sensing to eliminate effect of power output lead resistance on DC regulation.

### PHYSICAL DATA

Series	Lbs. Net	Lbs. Ship	Size Inches
LK-340-A-FM	35	41	5 <sup>3</sup> / <sub>16</sub> × 8 <sup>3</sup> / <sub>8</sub> × 16
LK-350-A-FM	95	125	5 <sup>3</sup> / <sub>16</sub> × 19 × 16 <sup>1</sup> / <sub>2</sub>

### PANEL FINISH

Brushed aluminum clear anodized panels with grey inlay (standard).

### ACCESSORIES

Rack adapters LRA-1, LRA-2 (LK-340 series only) and other accessories are available. See Part IV of this catalog.

### OPTIONS

#### AC INPUT

Add Suffix	For Operation at:	Price
–V	187 to 242VAC 47-63Hz	20%
–V1	205 to 265VAC 47-63Hz	20%

For 50Hz operation derate current 10% for all models.

### FUNGUS PROOFING

Add suffix "R" to model number and add 10% to price.

### GUARANTEED FOR 5 YEARS

5-year guarantee includes labor as well as parts. Guarantee applies to operation at full published specifications at end of 5 years.

# PART III—TEST, SYSTEMS AND LABORATORY POWER SUPPLIES

## LABORATORY AND TEST SELECTOR GUIDE

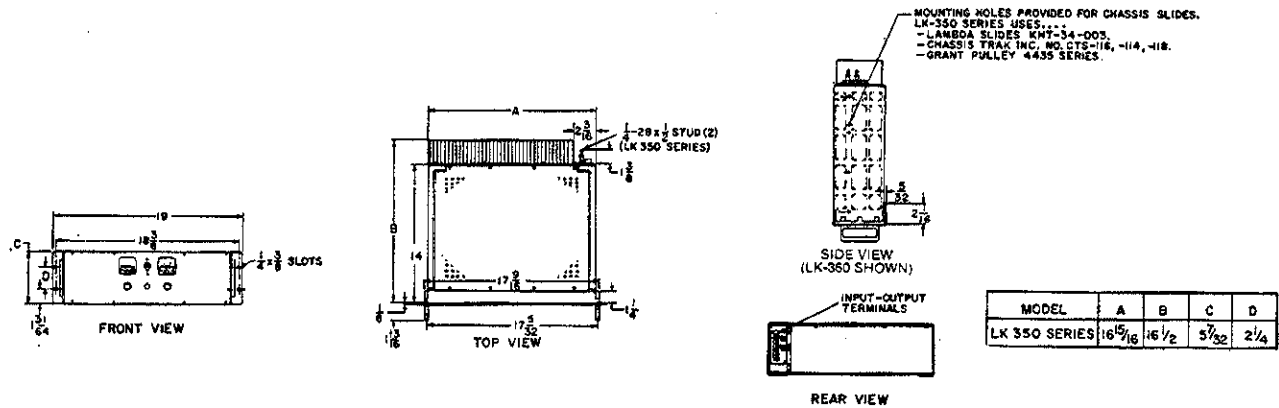
### LK Series.

MAX CURRENT AT AMBIENT OF (AMPS)				COMPLETE ELEC. SPEC. PG.	COMPLETE MECH. SPEC. PG.	DIMENSIONS (Inches)	QTY. 1	PRICE QTY. 10	QTY. 25	MODEL
40°C	50°C	60°C	71°C							
0-20 VOLTS										
8.0	7.0	6.1	4.9	133	193	5 <sup>3</sup> / <sub>16</sub> × 8 <sup>3</sup> / <sub>8</sub> × 16	\$1841	\$1753	\$1683	LK-340-A-FM
13.5	11.0	10.0	7.7	133	193	5 <sup>3</sup> / <sub>16</sub> × 8 <sup>3</sup> / <sub>8</sub> × 16	2291	2182	2095	LK-341-A-FM
35.0	31.0	26.0	20.0	133	193	5 <sup>3</sup> / <sub>16</sub> × 19 × 16 <sup>1</sup> / <sub>2</sub>	3212	3060	2937	LK-350-FM
0-36 VOLTS										
5.2	5.0	4.5	3.7	133	193	5 <sup>3</sup> / <sub>16</sub> × 8 <sup>3</sup> / <sub>8</sub> × 16	1841	1753	1683	LK-342-A-FM
9.0	8.5	7.6	6.1	133	193	5 <sup>3</sup> / <sub>16</sub> × 8 <sup>3</sup> / <sub>8</sub> × 16	2291	2182	2095	LK-343-A-FM
25.0	23.0	20.0	15.0	133	193	5 <sup>3</sup> / <sub>16</sub> × 19 × 16 <sup>1</sup> / <sub>2</sub>	3212	3060	2937	LK-351-FM
0-60 VOLTS										
4.0	3.5	3.0	2.5	133	193	5 <sup>3</sup> / <sub>16</sub> × 8 <sup>3</sup> / <sub>8</sub> × 16	1998	1904	1827	LK-344-A-FM
6.0	5.2	4.5	4.0	133	193	5 <sup>3</sup> / <sub>16</sub> × 8 <sup>3</sup> / <sub>8</sub> × 16	2291	2182	2095	LK-345-A-FM
15.0	14.0	12.5	10.0	133	193	5 <sup>3</sup> / <sub>16</sub> × 19 × 16 <sup>1</sup> / <sub>2</sub>	3458	3294	3162	LK-352-FM

# PART V—MECHANICAL DRAWINGS

## LK SERIES AND LPT SERIES

### LK Series—Full-Rack Models



### LK Series—<sup>1</sup>/<sub>2</sub> Rack

