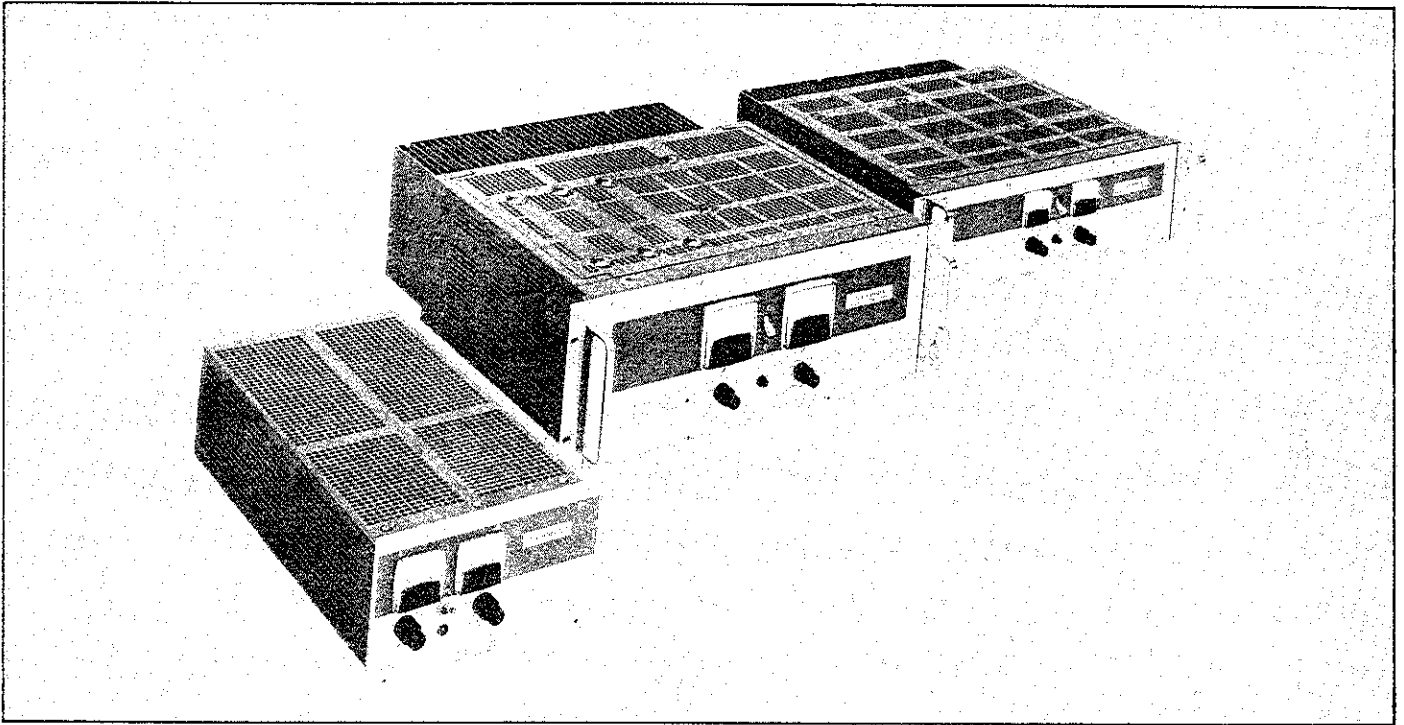


PART III—LAB, TEST EQUIPMENT AND SYSTEM POWER SUPPLIES

Lambda LK series



Voltage and current ratings

MODEL	REGULATION	RIPPLE (RMS)	MAX. CURRENT, AMPS AT AMBIENT OF: ⁽¹⁾				DIMENSIONS	PRICE
			40°C	50°C	60°C	71°C		
0-20 VOLTS								
LK-340-A-FM	0.015% or 1 mV	500 μ V	8.0	7.0	6.1	4.9	5-3/16" x 8-3/8" x 16"	\$1131
LK-341-A-FM	0.015% or 1 mV	500 μ V	13.5	11.0	10.0	7.7	5-3/16" x 8-3/8" x 16"	1422
LK-350-FM	0.015% or 1 mV	500 μ V	35.0	31.0	26.0	20.0	5-3/16" x 19" x 16-1/2"	1972
LK-360-FM*	0.015% or 1 mV	500 μ V	66.0	59.0	50.0	40.0	7" x 19" x 8-1/2"	3067
0-36 VOLTS								
LK-342-A-FM	0.015% or 1 mV	500 μ V	5.2	5.0	4.5	3.7	5-3/16" x 8-3/8" x 16"	1131
LK-343-A-FM	0.015% or 1 mV	500 μ V	9.0	8.5	7.6	6.1	5-3/16" x 8-3/8" x 16"	1422
LK-351-FM	0.015% or 1 mV	500 μ V	25.0	23.0	20.0	15.0	5-3/16" x 19" x 16-1/2"	1972
LK-361-FM*	0.015% or 1 mV	500 μ V	48.0	43.0	36.0	30.0	7" x 19" x 16-1/2"	3067
0-60 VOLTS								
LK-344-A-FM	0.015% or 1 mV	500 μ V	4.0	3.5	3.0	2.5	5-3/16" x 8-3/8" x 16"	1190
LK-345-A-FM	0.015% or 1 mV	500 μ V	6.0	5.2	4.5	4.0	5-3/16" x 8-3/8" x 16"	1422
LK-352-FM	0.015% or 1 mV	500 μ V	15.0	14.0	12.5	10.0	5-3/16" x 19" x 16-1/2"	2127
LK-362-FM*	0.015% or 1 mV	500 μ V	25.0	24.0	22.0	19.0	7" x 19" x 16-1/2"	3067

*AC INPUT 188-238 VAC STANDARD

OVERVOLTAGE PROTECTOR ACCESSORIES

ADJ. VOLT. RANGE VDC	MODEL	FOR USE WITH	PRICE
3-24	LH-OV-4	LK-340-A-FM, 341-A-FM	\$56
3-47	LH-OV-5	LK-342-A-FM, 343-A-FM	56
3-70	LH-OV-6	LK-344-A-FM, 345-A-FM	56
3-70	Add "OV" to Model No.	LK-350-FM to 352-FM	136
3-70		LK-360-FM to 362-FM	185

NOTES:

⁽¹⁾ Current rating applies over entire voltage range.

⁽²⁾ Chassis slides for full models. See page 105.

Features — LK series

Convection-cooled, no blower, no external heat sinking
 No voltage spikes or overshoot on turn-on, turn-off or power failure
 Series/Parallel operation
 Constant voltage/constant current
 Remotely programmable all models, by voltage or resistance

Meet mil, environment specs:
 Vibration: MIL-T-4807A
 Shock: MIL-E-4970A Proc. 1 & 2
 Humidity: MIL-STD-819 Meth. 507
 Temp. Shock: MIL-E-5272C (ASG) Proc. 1
 Altitude: MIL-E-4970A (ASG) Proc. 1

Specifications

DC Output

Voltage ranges shown in tables.

REGULATED VOLTAGE

regulation, line or load 0.015% or 1 mV whichever is greater for line variations from 105-132 VAC, (or 188-238 VAC LK-360-FM series); or for load changes from no load to full load.
 remote programming resistance 200 ohms/volt nominal
 remote programming voltage volt per volt
 ripple and noise 500 μ V RMS; with either pos. or neg. terminal grounded.
 temperature coefficient 0.015%/°C

Constant Current

(Current regulated line and load.)

AUTOMATIC CROSSOVER

voltage range as shown in tables.
 current range minimum—5% of 40°C rating. maximum—as shown in tables.
 regulation, line less than 10 mA or 0.1% whichever is greater for Input Variations of 105-132 VAC (188-238 VAC LK-360-FM series).
 regulation, load less than 10 mA or 0.1% whichever is greater—from 0 to rated VDC load voltage change.

AC Input

105-132 VAC, 47-63 Hz. (188-238 VAC, 47-63 Hz LK-360-FM Series only). For operation at 50 Hz derate output current by 10%. 187-242 VAC, see AC option.

Ambient Operating Temperature Range

Continuous duty from 0°C to +71°C with load current ratings shown in tables.

Storage Temperature Range

—55°C to +85°C.

Overload Protection

THERMAL

Thermostat; automatic reset when over-temp. condition is removed.

ELECTRICAL

External overload protection: adjustable, automatic electronic current limiting circuit limits the output current to the preset value, thereby providing protection for load as well as power supply. Current limiting settability to 105% of rated current. Internal failure protection: provided by fuse.

Input and Output Connections

Terminal block on rear of chassis.

Meters

Voltmeter and ammeter on all models.

Controls

DC Output Controls

Coarse and fine voltage adjust and coarse and fine current adjust on front panel.

Power

On-off switch, front panel, —½ rack models; circuit breakers, front panel—full-rack models.

Remote Sensing

Provision is made for remote sensing to eliminate effect of power output lead resistance on DC regulation.

Physical Data

Series	Weight		Size Inches
	Lbs. Net	Lbs. Ship	
LK-340-A-FM	35	41	5-3/16 x 8-3/8 x 16
LK-350-A-FM	95	125	5-3/16 x 19 x 16-1/2
LK-360-A-FM	135	170	7 x 19 x 18-1/2

Panel Finish

Brushed aluminum clear anodized panels with grey inlay (standard).

Accessories

Rack adapters LRA-1, LRA-2 (LK-340 series only) chassis slides, over-voltage protectors, pot covers, blank panels. See page 105.

Options

AC Input

For LK-340, LK-350 Series Only.

Add Suffix	For Operation at:	Price Qty. 1-14	Price Single Model Qty. 15 & up	Price Mixed Model Qty. 15 & up
—V	187-242 VAC 47-63 Hz	12%	10%	12%
—V1	205-265 VAC 47-63 Hz	12%	10%	12%

For LK-360 Series Only

—V1	205-265 VAC 47-63 Hz	12%	10%	12%
-----	-------------------------	-----	-----	-----

For 50 Hz operation derate current 10% for all models.

Fungus Proofing

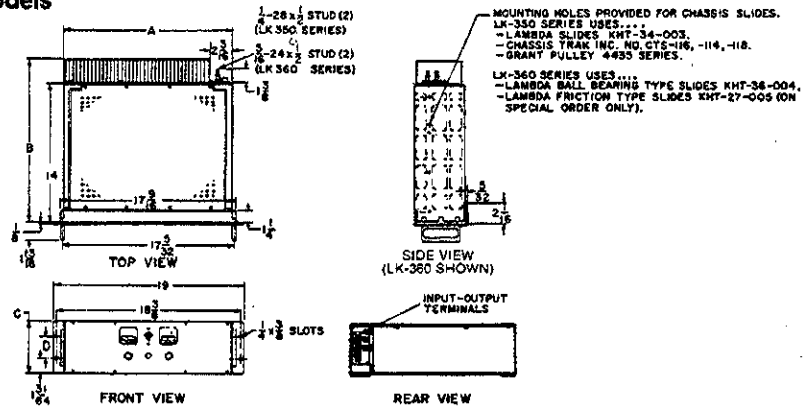
Add suffix "R" to model number and add 10% to price.

Guaranteed for 5 Years

5-year guarantee includes labor as well as parts. Guarantee applies to operation at full published specifications at end of 5 years.

PART IV—DIMENSIONAL DRAWINGS LK SERIES FULL-RACK MODELS,

LK Series—Full-Rack Models



MODEL	A	B	C	D
LK 350 SERIES	$16 \frac{5}{16}$	$16 \frac{1}{2}$	$5 \frac{7}{32}$	$2 \frac{1}{4}$
LK 360 SERIES	17	$18 \frac{1}{2}$	$6 \frac{31}{32}$	4