**Universal AC Input****Wide Range Output Adjustment****Power Factor & Harmonic Correction****Input Transient Protection****Worldwide Safety Agency Approvals****Single Wire Current Sharing****Optional DIN Rail Mounting****Lambda's 3 Year Warranty**

The new JFS Series utilizes Lambda's traditional design techniques ensuring high performance and reliable operation in today's demanding Industrial applications. The JFS Series continues to operate through surges, sags, spikes and lightning strike.

Available in five package sizes from 500-2000 watts with nominal outputs of 24 & 48 volts. Built-in features include Remote ON/OFF, AC Power Fail, DC Good, Input Transient Protection and Active Current Sharing. The JFS Series is designed for worldwide market, the JFS features Power Factor & Harmonic Correction, Universal AC Input, International Agency Approvals and the CE Mark.

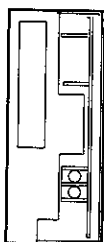
Similar products**Page**

UF	Low Voltage Outputs	50
LZS/SE	Harsh Environment	58
FE	Hot Plug	66
JWS	Lower Power, Single Output	24

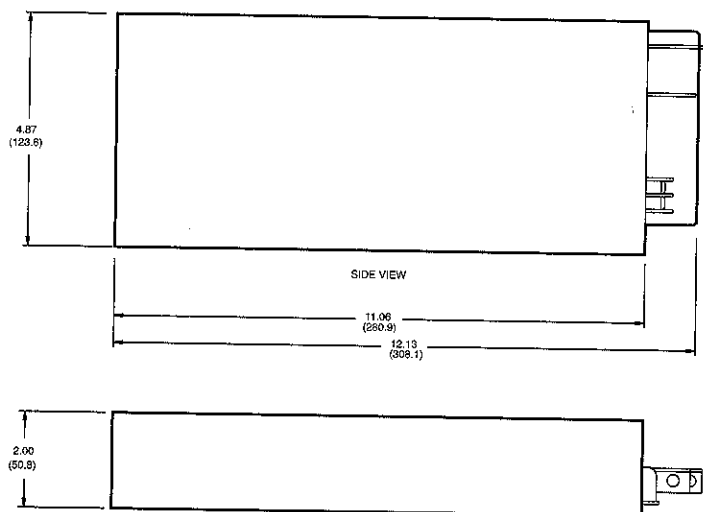
AC Input	85 -265VAC, 47-63Hz (170-265VAC for JFS-2000).
DC Input	120-330VDC.
Efficiency	75% (typical).
Power Factor Correction	0.99 (Typical), IEC1000-3-2.
Input Transient Protection ..	EN61000-4 (-2,-3,-4,-5,-6). IEC1000-4 (-2,-3,-4,-5,-6). IEC301- (-2,-3,-4,-5).
EMI	Conducted and Radiated per: EN55022-Curve A & FCC Class A.
DC Output Controls	Active current sharing is achieved through a single wire connection.
Output Voltage Adj Range ..	Refer to the table.
Line Regulation	Less than 1%.
Load Regulation	Less than 1%.
Ripple and Noise	250 mV pk-pk for 24 volts. 500 mV pk-pk for 48 volts.
Hold-up Time	16ms (typical).
Overcurrent Protection	Electronic current limiting circuit limits the output current to less than 110% of the full power rating with automatic recovery.
Overvoltage Protection	Non-crowbar, non-latching inverter shutdown type OV.
Cooling	Internal Fan.
Operating Temperature Range	1.0% from no load to full load. 85-265VAC max.
Storage Temperature	-40°C to +85°C.
Humidity	10 to 90% RH (non-condensing).
Isolation	Input to Output - 3.0kVAC. Input to Chassis (FG) - 2.0kVAC. Output to Chassis (FG) - 500VDC.
Vibration and Shock	IEC68-2-6.
Shock	IEC68-2-27.
Output Good Signal	Conductance Good Signal; Secondary referenced, Open Collector Signal = Good.
Input Good Signal	Conductance Good Signal; Secondary referenced, Open Collector Signal = Active.
Output Status Indicator	A green LED when DC output is "ON".
Remote On/Off	Secondary referenced, Open enables the output.
Remote Sensing	Compensates for 0.25 VDC per leg.
Input and Output Connections	Barrier strip with cover or bus-bars.
Safety Agency Approval	UL1950, CSA22.2 No. 234, EN60950, IEC950 and CE Mark (Low Voltage Directive).
Din Rail Mounting Bracket ..	Consult factory.
Warranty	3 years.

OUTPUT	POWER (W)	MAX CURRENT AMPS AT				MODEL
		40°	50°	60°	71°	
24V (20.0-29.0)	500	20.8	20.8	15.6	10.4	JFS-0500-24
	750	31.2	31.2	23.4	15.6	JFS-0750-24
	1000	41.6	41.6	31.2	20.8	JFS-1000-24
	1500	62.5	62.5	46.8	31.2	JFS-1500-24
48V (36.0-56.0)	2000	83.3	83.3	62.4	41.6	JFS-2000-24
	500	10.4	10.4	7.8	5.2	JFS-0500-48
	750	15.6	15.6	11.7	7.8	JFS-0750-48
	1000	20.8	20.8	15.6	10.4	JFS-1000-48
	1500	31.2	31.2	23.4	15.6	JFS-1500-48
	2000	41.6	41.6	31.2	20.8	JFS-2000-48

JFS500



FRONT VIEW

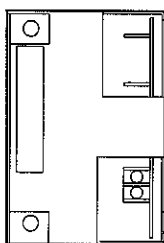


NOTE:

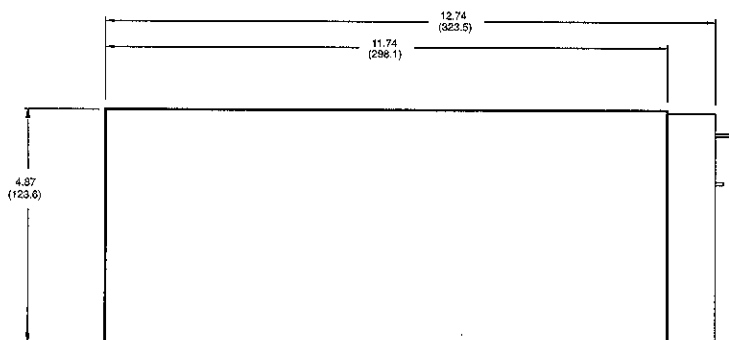
1. DIMENSIONS ARE IN INCHES EXCEPT DIMENSIONS () ARE IN MM.
2. WEIGHT: NET 8.0 LBS, SHIPPING 7.0 LBS.

JFS750/1000

JFS1500/2000



FRONT VIEW



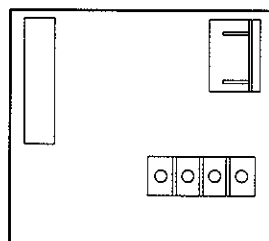
SIDE VIEW



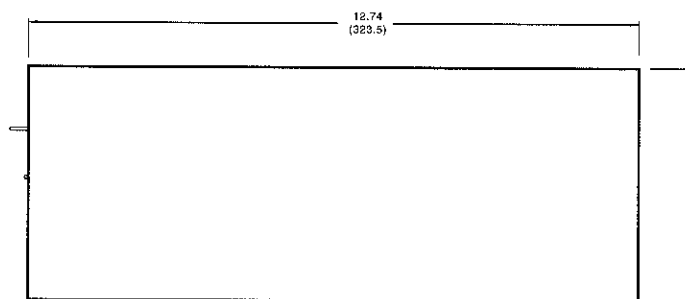
BOTTOM VIEW

NOTE:

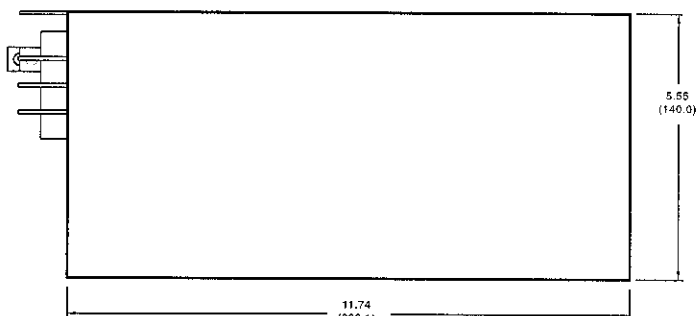
1. DIMENSIONS ARE IN INCHES EXCEPT DIMENSIONS () ARE IN MM.
2. WEIGHT: NET 7.0 LBS, SHIPPING 8.0 LBS.



FRONT VIEW



SIDE VIEW



BOTTOM VIEW

NOTE:

1. DIMENSIONS ARE IN INCHES EXCEPT DIMENSIONS () ARE IN MM.
2. WEIGHT: NET 9.0 LBS, SHIPPING 10.0 LBS.